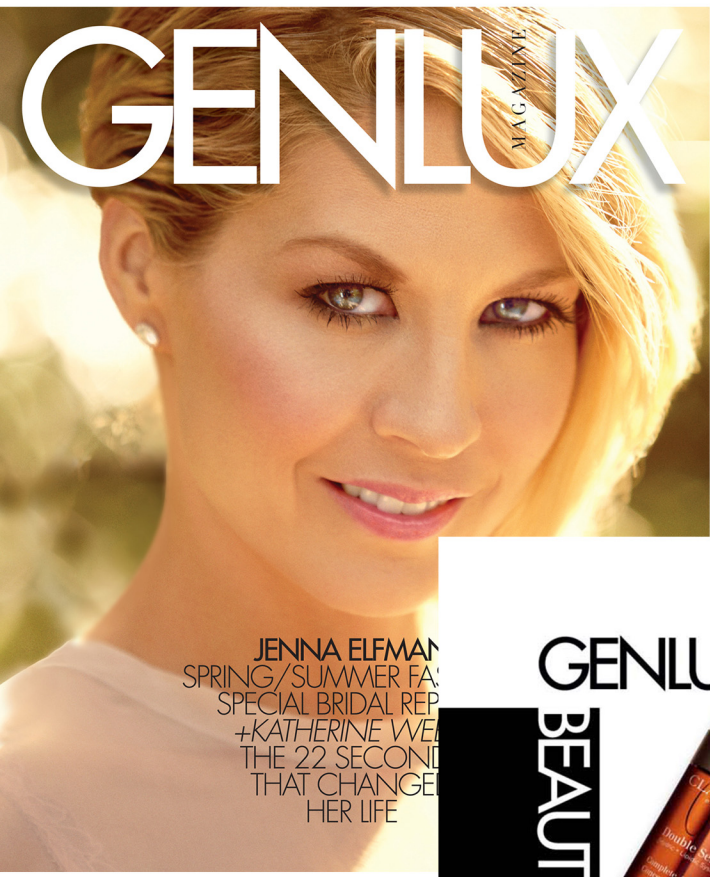


GENLUX

MAGAZINE



JENINA ELFMAN
 SPRING/SUMMER FA
 SPECIAL BRIDAL REP
 +KATHERINE WEA
 THE 22 SECOND
 THAT CHANGE
 HER LIFE

GENLUX SHOP

BEAUTY NEWS



STOP TIME

Clarins Double Serum is a special anti-aging treatment that addresses and reactivates the skin's five vital functions: hydration, nutrition, oxygenation, and protection and regeneration. *Clarins Double Serum, \$85, Bloomingdale's Century City, LA, 310-772-2100, bloomingdales.com; Nordstrom, South Coast Plaza, 714-549-8300*

BEAUTY DIRECTOR CAMILLE CLARK KEEPS HER FINGER ON THE PULSE OF NEW PRODUCTS. HERE, SHE LETS YOU IN ON THE LATEST AND GREATEST TO HIT THE STREETS! SOME ARE JUST HITTING, SOME ARE JUST AROUND THE CORNER, BUT ALL WILL BE ON YOUR VANITY REAL SOON!



YOUR TRUE COLOR

SEPHORA + PANTONE COLOR IQ is the most advanced foundation matching solution available. It's the first and only beauty system to scan the surface of the skin, assign an official PANTONE® SkinTone™ number, and match a scientifically precise foundation shade from Sephora's 1,000 foundations, brands and formulas! Complimentary and no appointment necessary! *Sephora at the Beverly Center, LA, 310-657-9670, sephora.com*



BITE ME

BITE Beauty Champagne Cuvée Deluxe Lipstick Collection, is an artisanal collection of lipsticks derived from French Champagne grapes, freshwater Tahitian Black Pearl and Japanese silk powder. These limited-edition shades offer a mix of vibrant colors. *Bite Lipsticks, \$72, Sephora, LA, 310-657-9670, South Coast Plaza, 714-429-9130, sephora.com*

SEE THE WHITE

Got an upcoming event? Like tomorrow? **NovaWhiteGo Kits** whiten your teeth quickly. The kits include two boil-and-bite trays for creating the upper and lower impressions, a retainer case, and your choice of three syringes that contain 10% carbamide peroxide gel for \$50; or 22% carbamide peroxide gel for \$54. *novawhite.com*



Oh, M'eye

Shu Uemura The Rainbow Feather L are a pair of lashes exploding with fluffy green, pink, orange, blue, and yellow feathers. \$50, *shuueamura-usa.com*



Beauty's More than Skin Deep

Lisa Wayne introduces her **Beverly Hills Inside Out™** skin and hair care systems that ingeniously work both sides of your skin and scalp. How? The five-piece collection of skincare (cleanser, day cream, night cream, eye cream, and hydrating mist); and hair products (shampoo and conditioner); work on the outside, while a 30-day regimen of vitamins that focuses on delivering skin- and scalp-enhancing nutrients helps from the inside. The result? Glowing skin and voluminous hair like you've never seen before. *LisaWayneBHIO.com*

